



Maintaining your garden bore

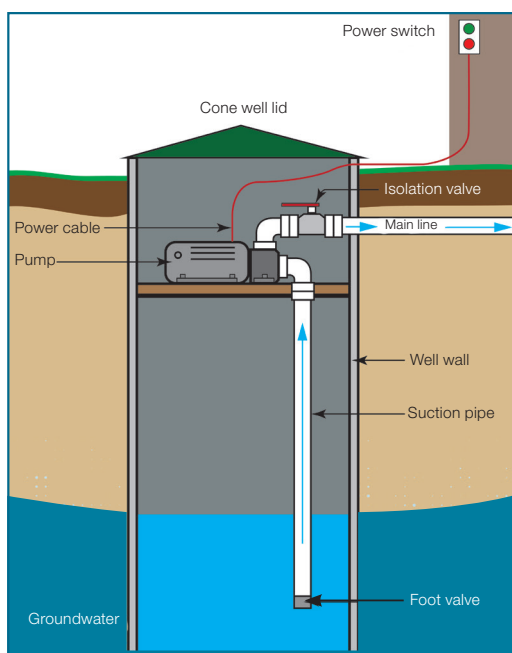
Regularly maintaining your garden bore and irrigation system ensures they will work efficiently in the long term, helping your system to perform better and reducing your pump's running costs.

How does a garden bore work?

The key components of a garden bore are the bore hole or well, the pipe work and a pump. The pipe provides access to water stored in underground aquifers and the pump draws this water to the surface.

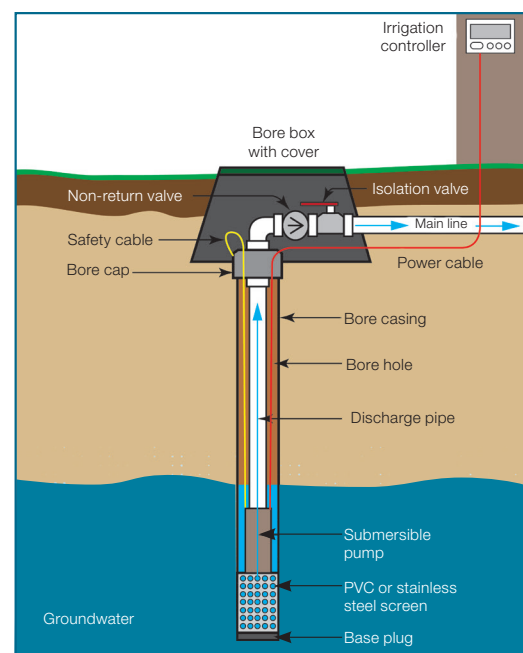
Well bore

Older well-style bores usually have a metal cone-like lid and a manual on and off switch. A manual switch can result in overwatering if the operator forgets to turn the switch off.



Submersible pump bore

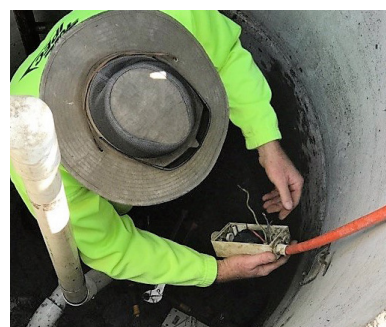
Newer submersible pump bores are usually located underground in a box with a lid that is flush with the ground. Submersible bore pumps are more energy efficient than older types of pumps.



Maintenance tips

Follow these tips to get the most out of your garden bore:

1. Use an accredited driller who is experienced with the soil and groundwater conditions in your area.
2. Keep your garden bore records. An accredited driller will provide you with a 'bore log' indicating bore depth, soil composition, yield and pump make and model. Keep these records with your house plans. These records can be invaluable, either for you or a subsequent owner.
3. Install a protective cover and ensure it remains intact so the garden bore headworks can be easily found and accessed.
4. Regularly inspect your bore headworks, casing and pump for signs of scaling, corrosion or damage.
5. Connect your garden bore to an irrigation system, and preferably to a smart irrigation controller, to help ensure efficient watering.
6. During the winter sprinkler switch off, run your system to the minimum extent necessary to keep your pump in good working order.
7. Before spring when irrigation starts again, check your irrigation system is not leaking and replace any broken or clogged sprinkler nozzles. Remember to run your garden bore for the minimum extent necessary.
8. Seek assistance from an endorsed Waterwise Garden Irrigator or Waterwise Irrigation Design Shop (retail outlet) to help you with all irrigation and bore maintenance, troubleshooting and repairs. Visit: www.waterwiseprograms.com.au or www.watercorporation.com.au/Waterwise.
9. Keep the bore clean and in good working order. Never flush waste down a borehole.
10. Take regular water samples to check your water quality, in particular salinity and pH, which can indicate groundwater contamination, damaged bore casing and/or overpumping (in excess of the site's recharge).
11. Check if your garden bore water has changed colour or has any odours which can indicate contamination or the presence and build-up of iron bacteria that may impact your pump's efficiency.
12. If you decommission your bore, make sure you have it professionally capped to make it safe and prevent groundwater contamination.



**WATER
WISE
PERTH**
Action Plan