



Planning a waterwise garden

The average Perth household uses about 40 per cent of their scheme water on gardens and water use on gardens is even higher for households with a garden bore. Being groundwater wise is a great way to reduce your water consumption and energy use in your garden. It may even save you money.

A waterwise garden is the most efficient way you can save water

Planning and design play an important role in achieving a waterwise garden. Knowing the composition and dimensions of your garden can help you to understand how much water is needed.

Start by creating hydrozones – areas where plants are grouped according to their water, nutrient and maintenance requirements. This will make it easier to set up irrigation systems to deliver the right amount of water for your plants' needs.

Waterwise garden design should incorporate waterwise plants and a functional mix of hard surface, garden beds and lawn species suitable for Perth's climate.

Hydrozone 1:

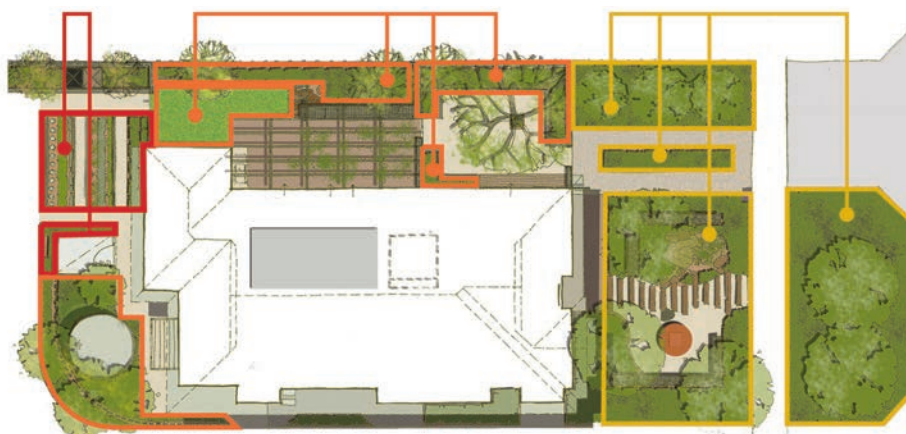
High-resource needs:
productive garden beds

Hydrozone 2:

Medium-resource needs:
lawns, exotic trees and shrubs

Hydrozone 3:

Low-resource needs:
native trees and shrubs





More ways to achieve a water efficient garden



Choose waterwise Western Australian native and drought-tolerant plants suitable for your area.



Use a waterwise garden and irrigation specialist to design, install, repair and maintain irrigation systems.



Install automatic irrigation controllers that can be programmed to suit climatic conditions, seasons and watering rosters. This will help reduce the likelihood of over or under watering.



Fit water-saving technologies such as evapotranspiration and rain and soil moisture sensors to your automatic irrigation system to prevent unnecessary watering.



Turn off sprinklers when it's raining and during winter. Only water before 9am or after 6pm and only once per day as rostered.



Choose sprinklers that are appropriate for the area of your garden. Use drip irrigation in garden beds and rotary sprinklers on lawns.



Use a functional mix of paved areas, garden beds and lawn in your garden design. Turf species should be suitable for Perth's climate.



Create hydrozones, where plants with similar water needs are grouped together in the garden.



Use good quality soil and apply a 5–10 cm layer of coarse mulch to reduce evaporation. Choose soil conditioners and mulches with the waterwise and Smart Approved WaterMark symbols.

Find out more

Water Corporation's waterwise plant, specialist and advice help:

www.watercorporation.com.au/Waterwise

Waterwise irrigation help:

www.waterwiseprograms.com.au

backgroundwaterwise.wa.gov.au

THINK CLIMATE CHANGE. BE WATERWISE.

**WATER
WISE
PERTH**
Action Plan